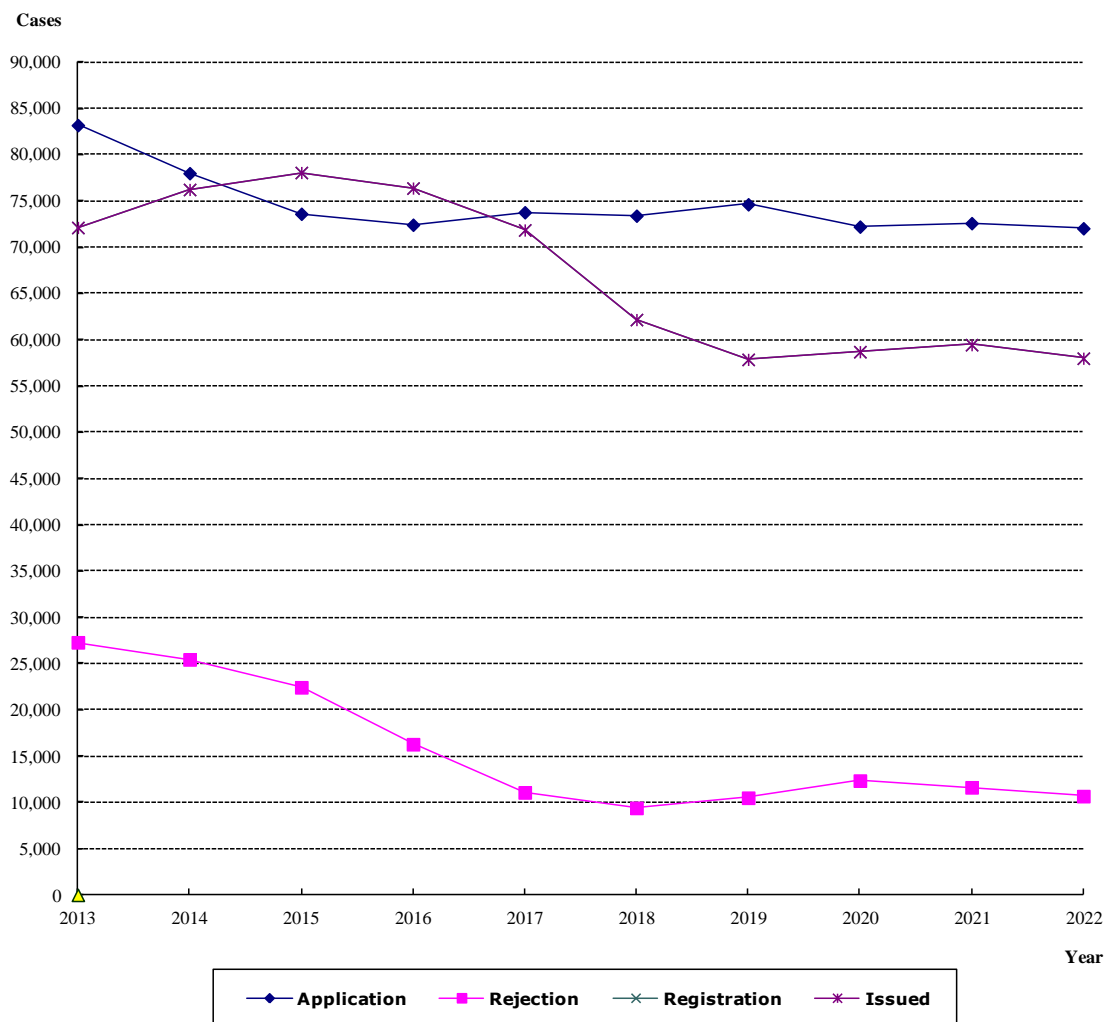


(1)-6 專利新申請,發證,公告發證,核駁案件統計 2013-2022
特許 (實用新案・意匠登録を含む) 新規出願、登録、公告登録、拒絶査定の件数統計
Patent / Application, Issued, Registration and Rejection from 2013 to 2022

Patent Application, Issued, Registration and Rejection

專利新申請,發證,公告發證,核駁案件統計



Year	2013	2014	2015	2016	2017	2018	2019	2020	2021	2022
Application	83,211	78,015	73,627	72,442	73,791	73,421	74,652	72,238	72,613	72,059
Rejection	27,304	25,456	22,442	16,290	11,078	9,404	10,502	12,354	11,628	10,679
Issued	72,147	76,258	78,089	76,406	71,878	62,193	57,887	58,719	59,478	58,015
Registration	72,142	76,252	78,087	76,406	71,877	62,193	57,886	58,719	59,476	58,014