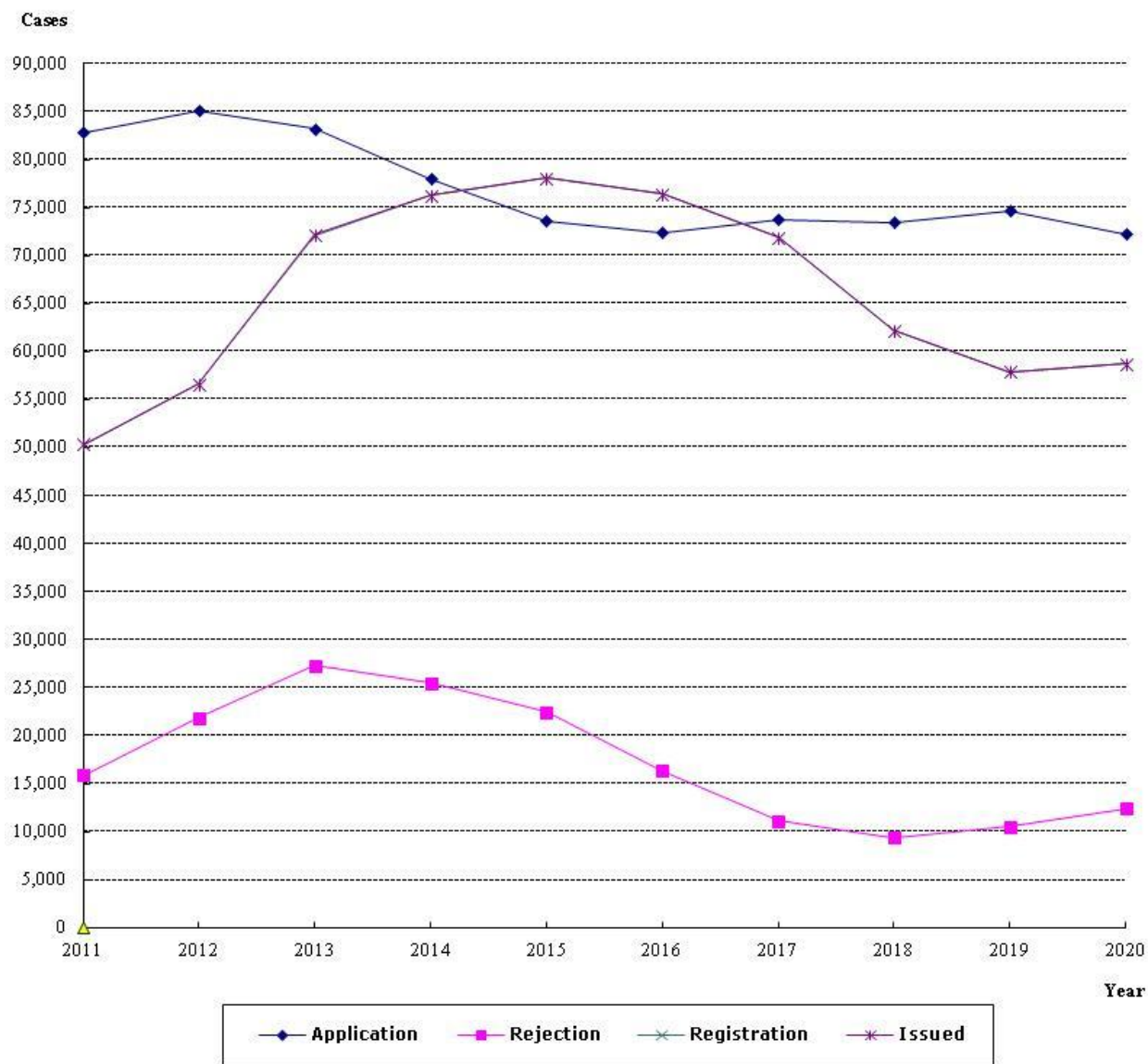


(1)-6 專利新申請,發證,公告發證,核駁案件統計 2011-2020
特許 (實用新案・意匠登録を含む) 新規出願、登録、公告登録、拒絶査定の件数統計
Patent / Application, Issued, Registration and Rejection from 2011 to 2020

Patent Application, Issued, Registration and Rejection
專利新申請,發證,公告發證,核駁案件統計



Year	2011	2012	2013	2014	2015	2016	2017	2018	2019	2020
Application	82,824	85,074	83,211	78,015	73,627	72,442	73,791	73,421	74,652	72,238
Rejection	15,894	21,819	27,304	25,456	22,442	16,290	11,078	9,404	10,502	12,354
Issued	50,313	56,611	72,147	76,258	78,089	76,406	71,878	62,193	57,887	58,719
Registration	50,305	56,608	72,142	76,252	78,087	76,406	71,877	62,193	57,886	58,719