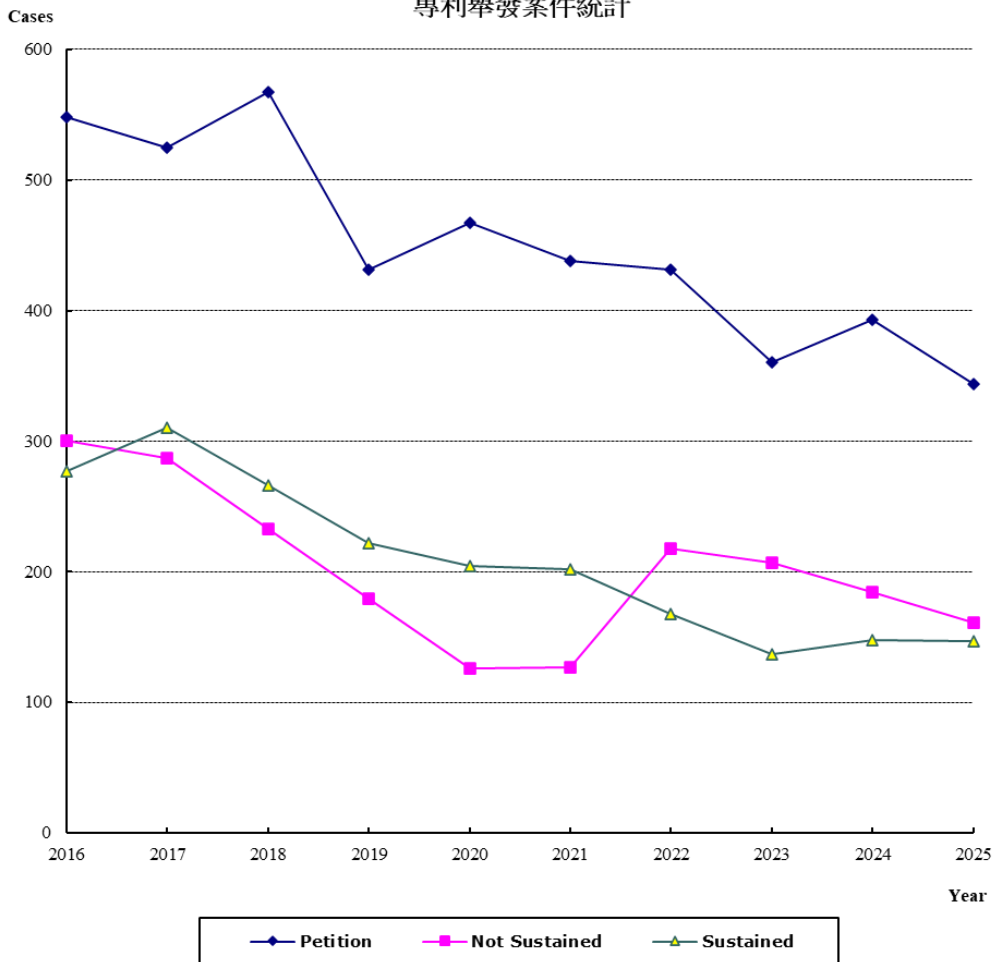


(1)-12 專利舉發案件統計 2016-2025  
特許（実用新案・意匠登録を含む）無効審判請求の件数統計  
Patent Invalidation from 2016 to 2025

**Patent Invalidation from 2016 to 2025**

專利舉發案件統計



Year	2016	2017	2018	2019	2020	2021	2022	2023	2024	2025
<b>Petition</b>	548	525	567	431	467	438	431	360	393	344
<b>Not Sustained</b>	300	287	233	179	126	127	218	207	184	161
<b>Sustained</b>	277	310	266	222	204	202	168	137	148	147