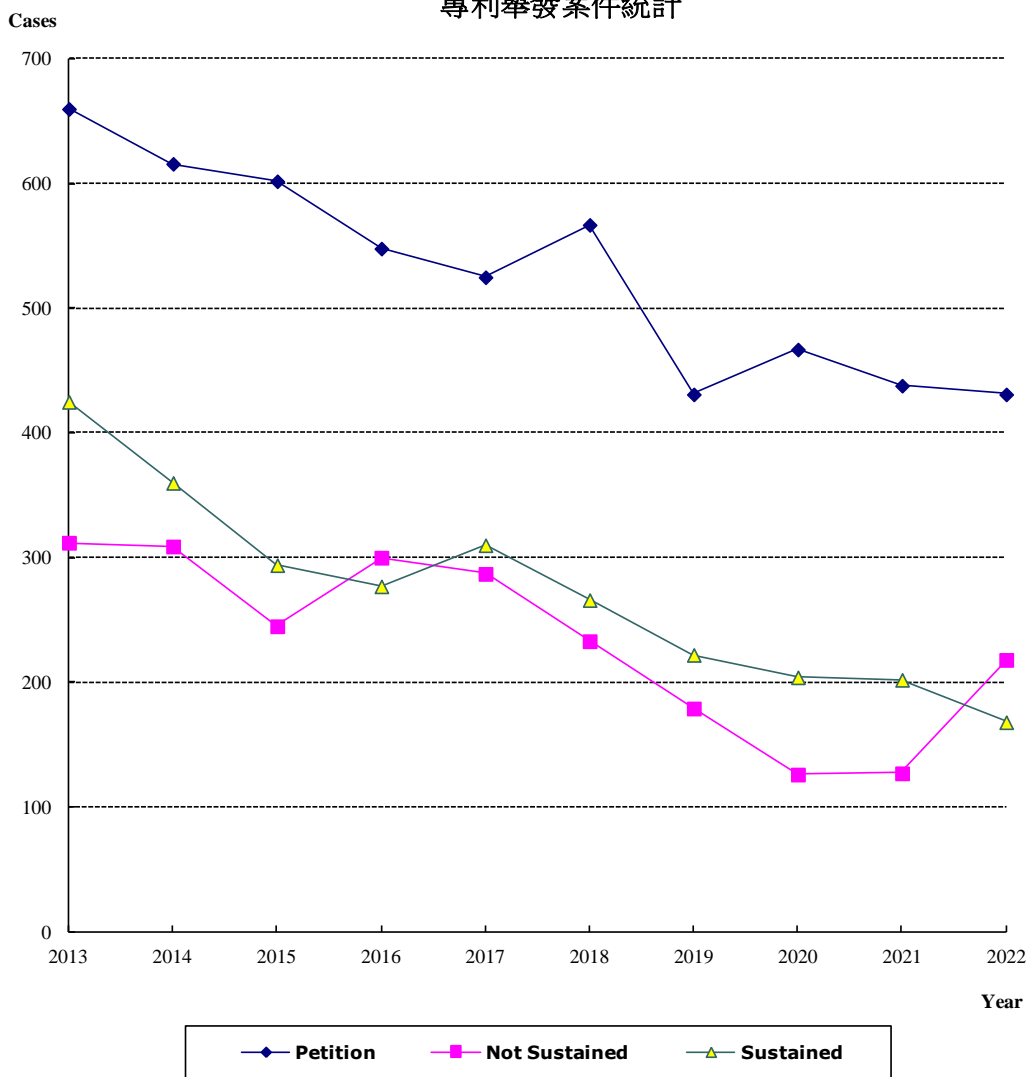


(1)-12 專利舉發案件統計 2013-2022  
特許（実用新案・意匠登録を含む）無効審判請求の件数統計  
Patent Invalidation from 2013 to 2022

**Patent Invalidation from 2013 to 2022**

專利舉發案件統計



Year	2013	2014	2015	2016	2017	2018	2019	2020	2021	2022
<b>Petition</b>	660	616	602	548	525	567	431	467	438	431
<b>Not Sustained</b>	312	309	245	300	287	233	179	126	127	218
<b>Sustained</b>	425	360	294	277	310	266	222	204	202	168