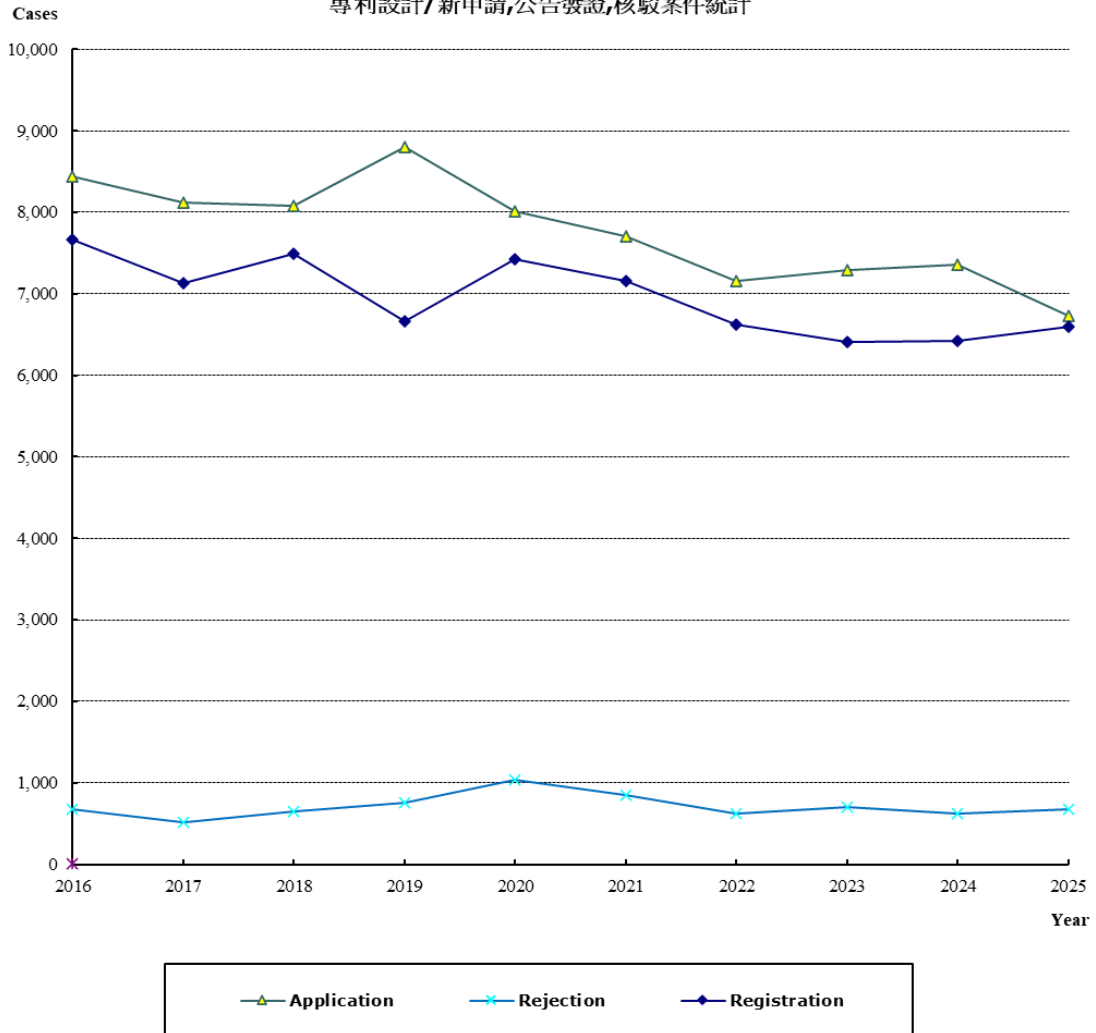


(1)-10 設計專利/新申請,發證,公告發證,核駁案件統計 2016-2025  
意匠登録/新規出願、登録、公告登録、拒絶査定の件数統計  
Design/Application, Issued, Registration and Rejection from 2016 to 2025

**Design Application, Registration and Rejection**

專利設計/新申請,公告發證,核駁案件統計



Year	2016	2017	2018	2019	2020	2021	2022	2023	2024	2025
<b>Application</b>	8,445	8,120	8,082	8,804	8,019	7,701	7,155	7,287	7,360	6,735
<b>Rejection</b>	672	521	643	753	1,043	853	629	697	628	679
<b>Registration</b>	7,666	7,130	7,487	6,660	7,419	7,158	6,627	6,410	6,421	6,597