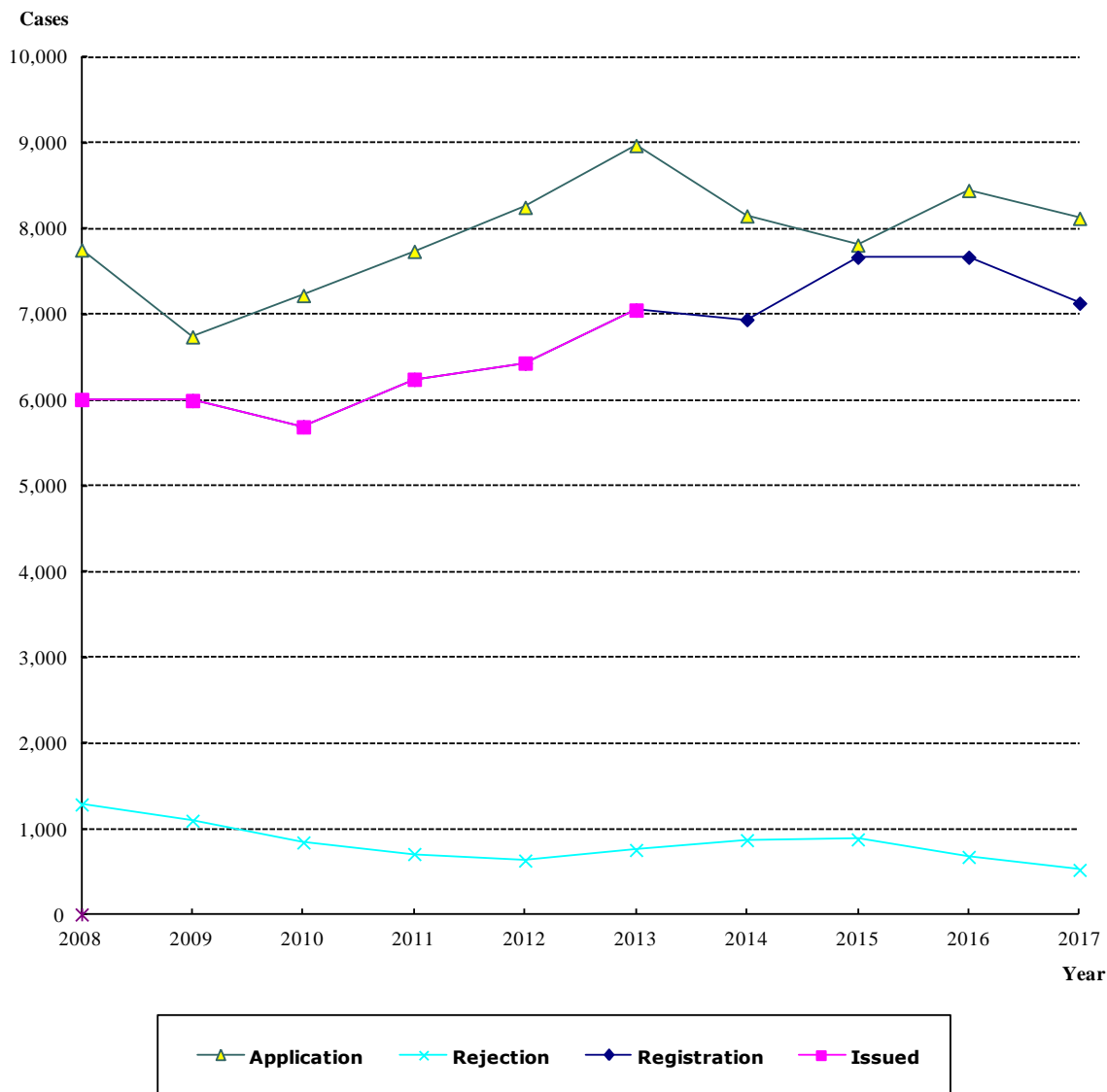


(1)-10 設計專利／新申請,發證,公告發證,核駁案件統計 2008-2017  
意匠登録／新規出願、登録、公告登録、拒絶査定の件数統計  
Design／Application, Issued, Registration and Rejection from 2008 to 2017



Year	2008	2009	2010	2011	2012	2013	2014	2015	2016	2017
<b>Application</b>	7,751	6,738	7,220	7,735	8,248	8,969	8,148	7,808	8,445	8,120
<b>Rejection</b>	1,284	1,094	841	706	630	753	868	877	672	521
<b>Issued</b>	6,007	5,995	5,688	6,243	6,432	7,050				
<b>Registration</b>	6,006	5,995	5,690	6,242	6,431	7,049	6,939	7,666	7,666	7,130