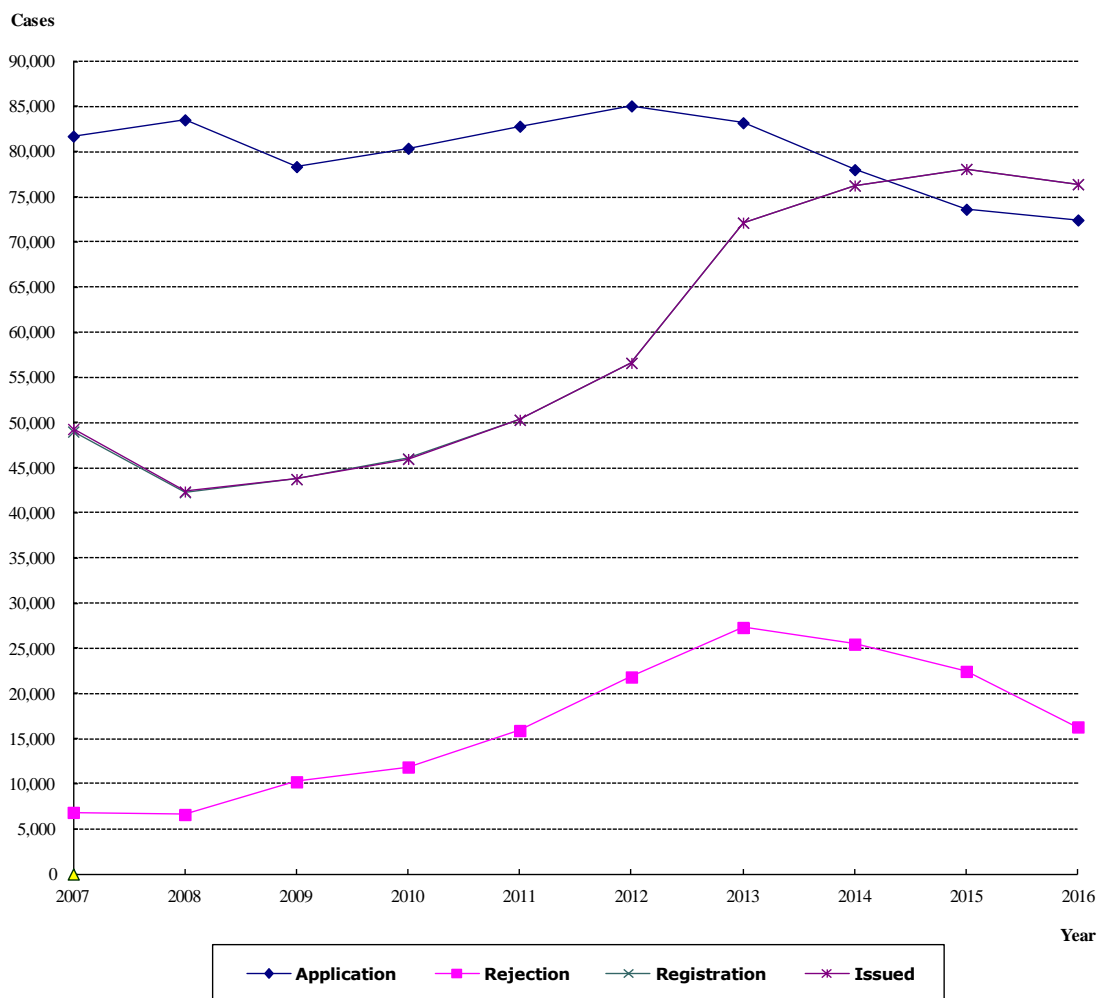


(1)-6 專利新申請,發證,公告發證,核駁案件統計 2007-2016
特許(實用新案・意匠登録を含む)新規出願、登録、公告登録、拒絶査定の件数統計
Patent/Application, Issued, Registration and Rejection from 2007 to 2016



Year	2007	2008	2009	2010	2011	2012	2013	2014	2015	2016
Application	81,728	83,534	78,352	80,380	82,824	85,074	83,211	78,015	73,627	72,442
Rejection	6,824	6,591	10,212	11,848	15,894	21,819	27,304	25,456	22,442	16,290
Issued	49,288	42,365	43,749	45,973	50,313	56,611	72,147	76,258	78,089	76,406
Registration	49,006	42,284	43,728	46,023	50,305	56,608	72,142	76,252	78,087	76,406